

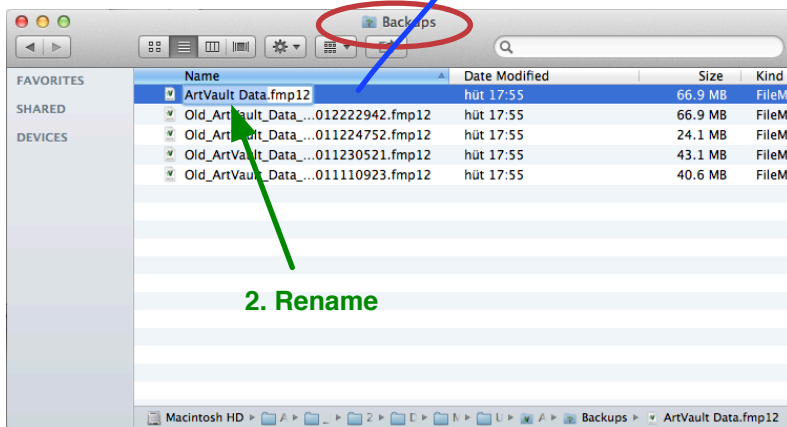
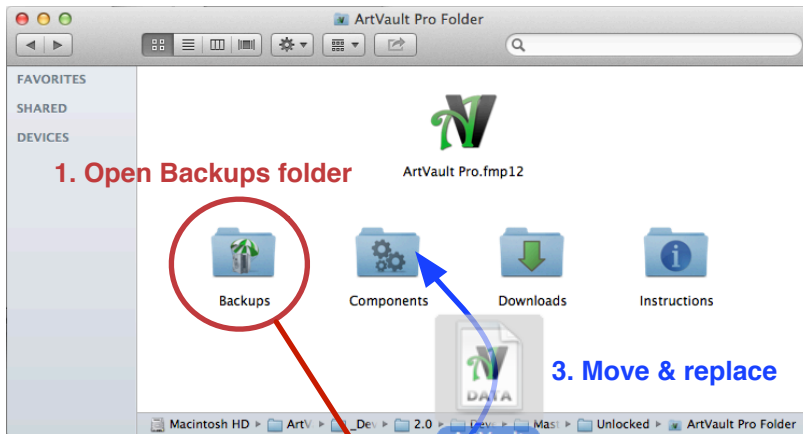


ArtVault Software

Restore ArtVault Pro from Backup

NOTE: BEFORE YOU BEGIN WITH THE PROCEDURE, COPY THE ENTIRE ARTVAULT FOLDER TO AN EXTERNAL DISK.

1. Quit ArtVault Pro and the FileMaker application
2. Locate the Backup folder within the ArtVault Folder
3. Locate the most recent backup of the ArtVault Data file ("Old_ArtVault_Data_'date'time'.fmp12')
4. Rename it to "ArtVault Data.fmp12" (without quotes, exactly as stated)



5. Drag the renamed file from the Backups folder to the main ArtVault Pro folder
6. Confirm replacement in the dialogue box



ArtVault is now restored to the state of the backup. You can launch it by opening the "ArtVault Pro.fmp12 icon. No further action is needed.